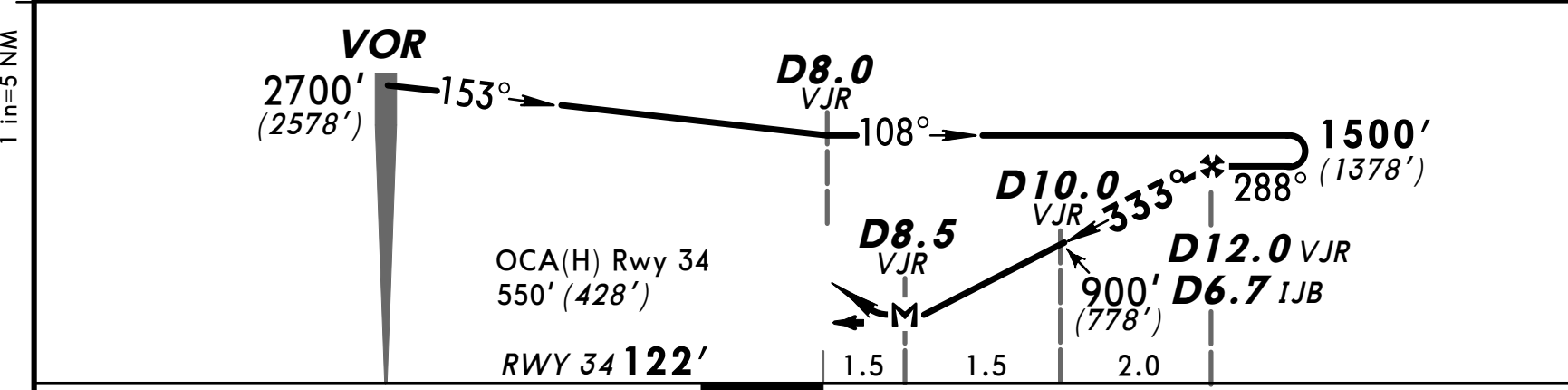
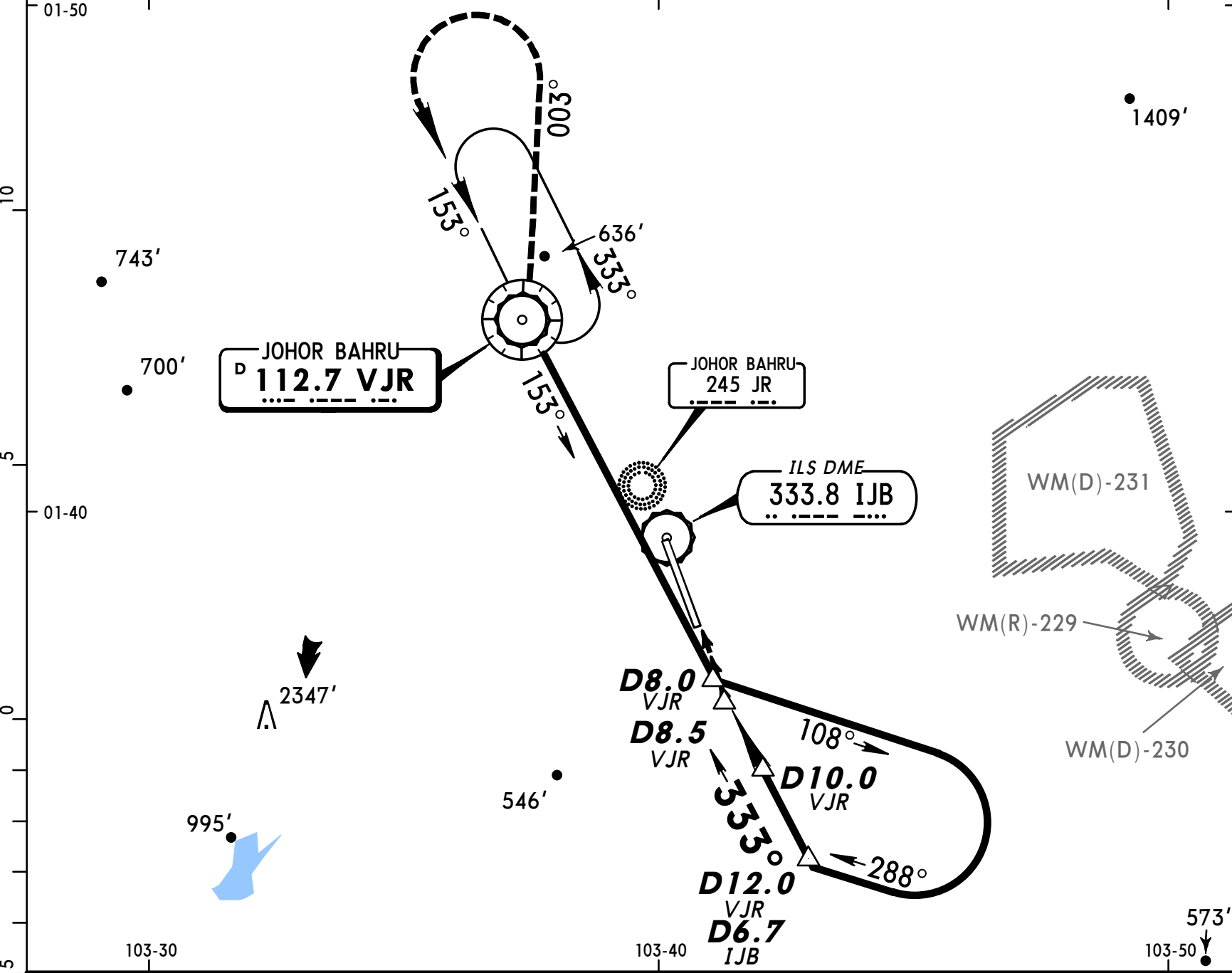


**WMKJ**  
**SULTAN ISMAIL**

22 DEC 00 (13-2)

**JEPPESEN JOHOR BAHRU, MALAYSIA**  
**VOR DME Rwy 34**

*ATIS <b>126.6</b>		*JOHOR Approach <b>124.7</b>		*JOHOR Tower <b>122.5</b>		*Ground <b>121.8</b>	
VOR VJR <b>112.7</b>	Final Apch Crs <b>333°</b>	Minimum Alt D12.0 <b>1500' (1378')</b>	MDA(H) <b>550' (428')</b>	Apt Elev <b>135'</b> RWY 34 <b>122'</b>		<p>MSA VJR VOR</p>	
<b>MISSED APCH:</b> Climb on 333° to cross VJR VOR at 1800' or above, and track on 003° to rejoin holding pattern or as directed by ATC .							
Alt Set: hPa Rwy Elev: 4 hPa Trans level: FL 130 Trans alt: 11000' (10878') 1. Procedure based on 185 kts IAS.							



Gnd speed-Kts	70	90	100	120	140	160	PAPI 	1800' on 333°	VJR <b>112.7</b>
Descent Gradient 4.8%	340	437	486	583	681	778			
MAP at D8.5									

PANS OPS	STRAIGHT-IN LANDING RWY34		Max Kts	CIRCLE-TO-LAND	
	ALS out	MDA(H) 550' (428')		MDA(H)	
A			100	670' (535')	-1900m
B	1200m		135	670' (535')	-2800m
C			180	1050' (915')	-3700m
D	1600m		205	1050' (915')	-4600m